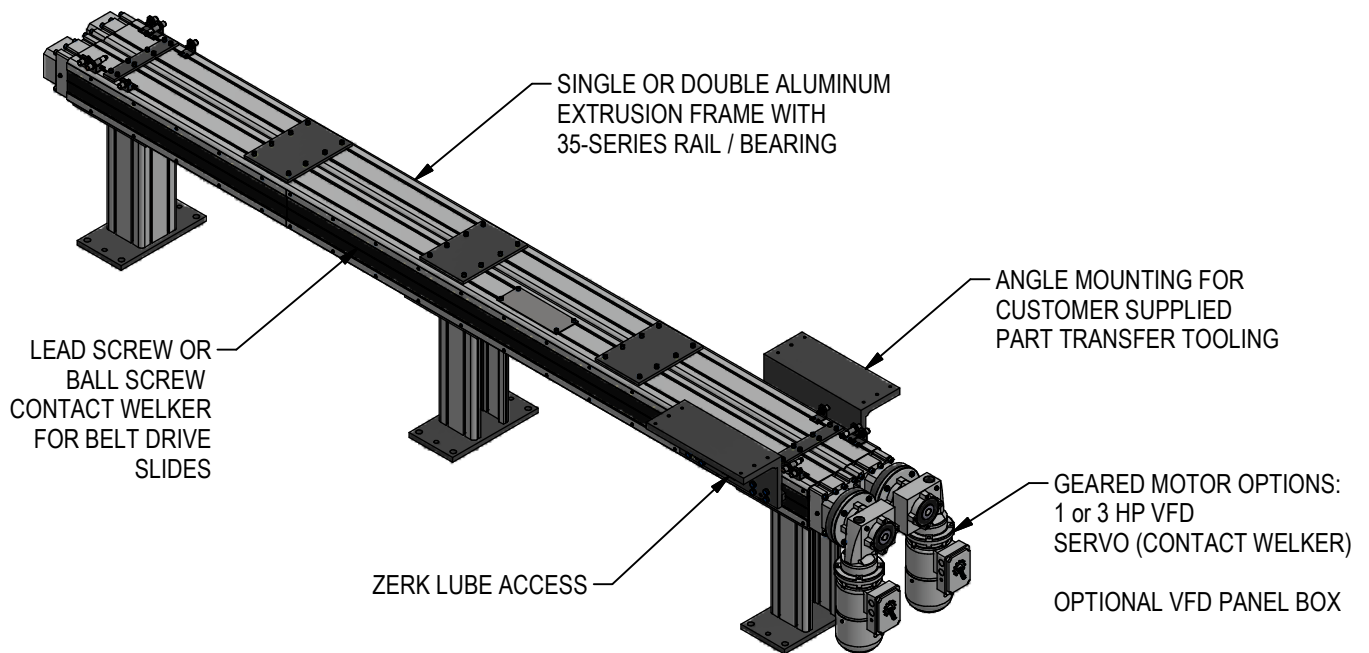


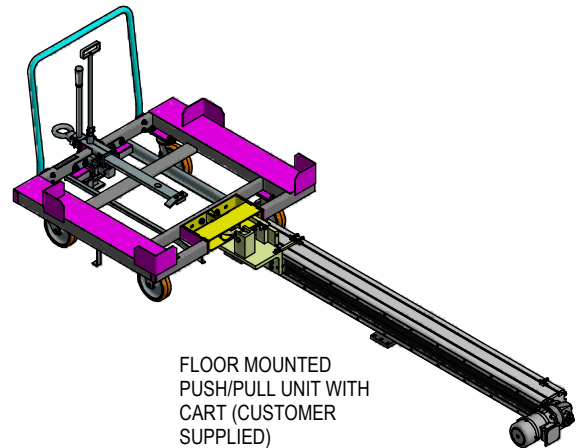
PART PRESENTATION SLIDES

THE WELKER PART PRESENTATION SLIDE OFFERS A COST AND SPACE SAVING ALTERNATIVE TO CONVEYORS. THE SLIDES UTILIZE ELECTRIC ACTUATORS, WHICH DELIVER A 90% REDUCTION IN ENERGY USAGE COMPARED TO LONG STROKE PNEUMATIC SLIDES.



APPLICATIONS:

- NESTED PART PRESENTATION
- DUNNAGE BIN/CART PRESENTATION
- END EFFECTOR STORAGE/RETRIEVAL
- WELD OR CLINCHING GUNS
- OVERHEAD SHUTTLE WITH DB4 LIFTER
- TIP DRESSER SHUTTLE
- REPLACE ACCUMULATING OR INDEX CONVEYOR AT MUCH LOWER COST



FLOOR MOUNTED
PUSH/PULL UNIT WITH
CART (CUSTOMER
SUPPLIED)

RELEASED 2/10/23

SINGLE EXTRUSION SLIDE ~ ORDER INFORMATION

A	E	S																	
---	---	---	--	--	--	--	--	--	--	--	--	--	--	--	--	--	--	--	--

Index

0400 400, 800, 1200, 1600, 2000, 2400
2800, 3200, 3600, 4000, 4400

Screw Type

B1 Ball 1.500 x 1.875
L1 Lead 1.875 x 4 (Standard)

Style

01 Single Extrusion (2 Bearing)
02 Single Extrusion (3 Bearing)

Angle Mounting

A None (Customer to supply)
B Inboard (Facing in towards extrusion)
C Outboard (Facing away from extrusion)

Leg Height

000 No legs (Standard Floor Plates)
350 350mm to 900mm
500mm Minimum for motor @ P3 (to clear floor)

Brake Motor & Gearbox Ratio ~ See Load Charts

A 460 VAC 1 hp 5:1
B 460 VAC 1 hp 7.5:1
E Servo (Contact Welker)
H 575 VAC 1 hp 5:1
J 575 VAC 1 hp 7.5:1
M 460 VAC 1 hp 10:1
P 575 VAC 1 hp 10:1

Leg Style

0 Aluminum Extrusion (Std)
A Weldment Brown 2.5Y 5/2
B Weldment Cream RAL-9001
C Weldment Light Grey RAL-7035
D Weldment Signal White RAL-9003
S Weldment Safety Blue RAL-5017
X Weldment (Customer to specify on Purchase Order)

Extrusion Orientation

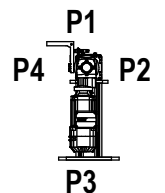
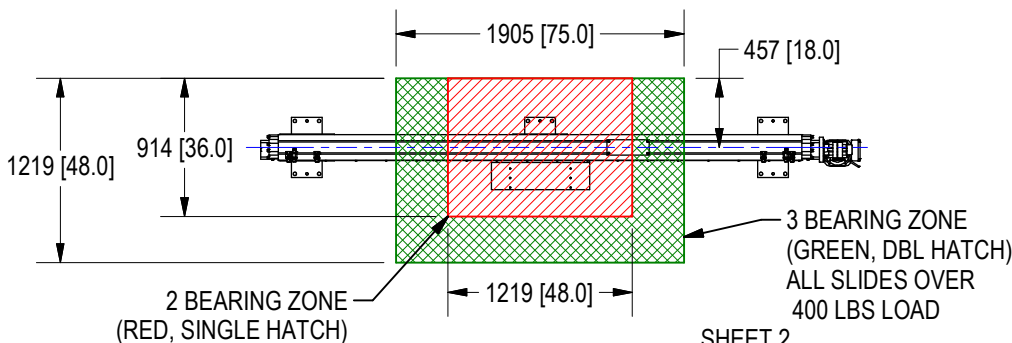
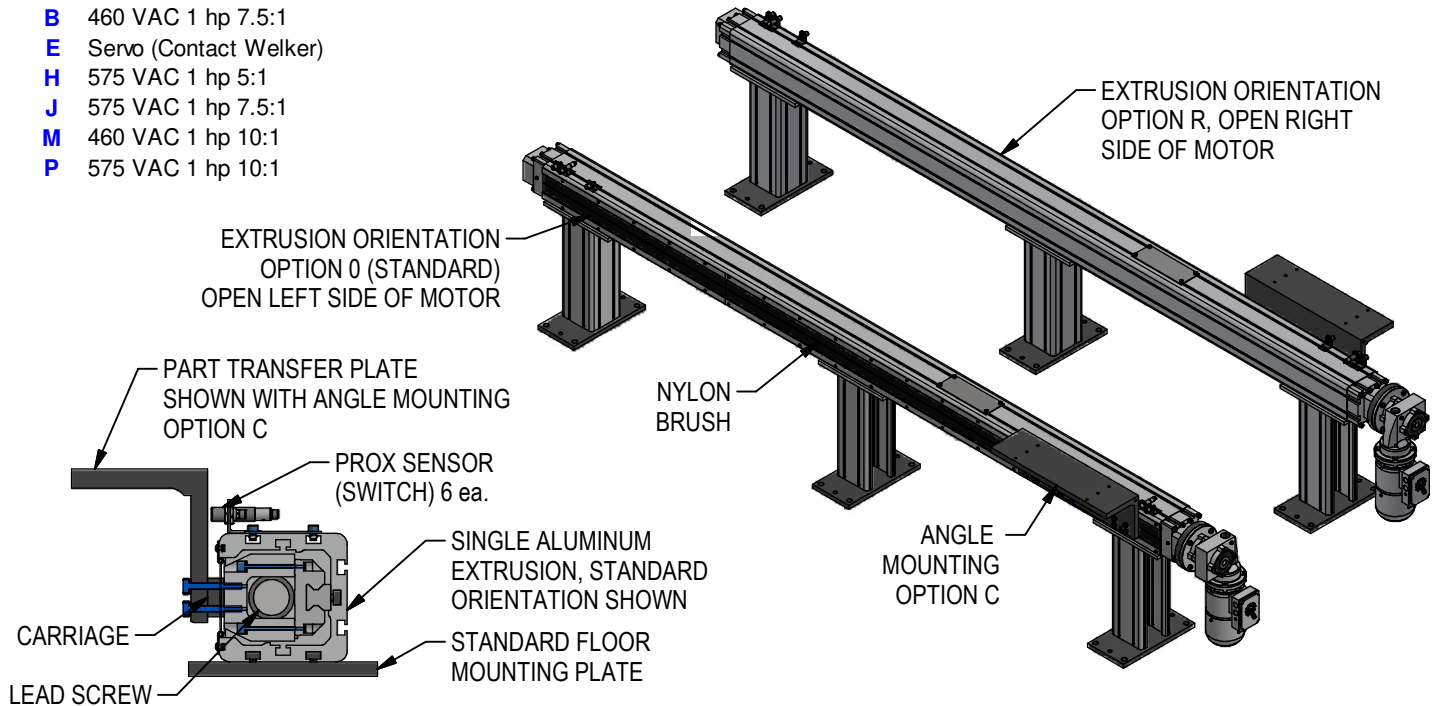
0 Open left of motor, Std
R Open right of motor

Switches (6)

0 None / Customer Supplied
W Welker Standard

Motor Orientation

1 Motor @ P1
2 Motor @ P2
3 Motor @ P3
4 Motor @ P4



(DO NOT SCALE DRAWING)

WELKER
ENGINEERED PRODUCTS
800-229-0890 www.welkerproducts.com

DOUBLE EXTRUSION SLIDE ~ ORDER INFORMATION

A	E	S										0	
---	---	---	--	--	--	--	--	--	--	--	--	---	--

Index

0400 400, 800, 1200, 1600, 2000, 2400
2800, 3200, 3600, 4000, 4400

Screw Type

B1 Ball 1.500 x 1.875
L1 Lead 1.875 x 4 (Standard)

Style

03 Double Extrusion (2 Bearing)
04 Double Extrusion (3 Bearing)

Angle Mounting

A None (Customer to supply)
B Inboard (Facing in towards extrusion)
C Outboard (Facing away from extrusion)
D Inboard with Standard Tie Plate
E Outboard with Standard Tie Plate

Leg Height

000 No legs (Standard Floor Plates)
350 350mm to 900mm
500mm Minimum for motor @ P3 (to clear floor)

Leg Style

0 Aluminum Extrusion (Standard)
A Weldment Brown 2.5Y 5/2
B Weldment Cream RAL-9001
C Weldment Light Grey RAL-7035
D Weldment Signal White RAL-9003
S Weldment Safety Blue RAL-5017
X Weldment (Customer to specify on Purchase Order)

Switches (6)

0 None / Customer Supplied
W Welker Standard

Motor Orientation

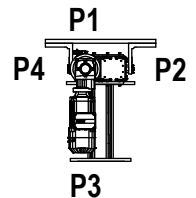
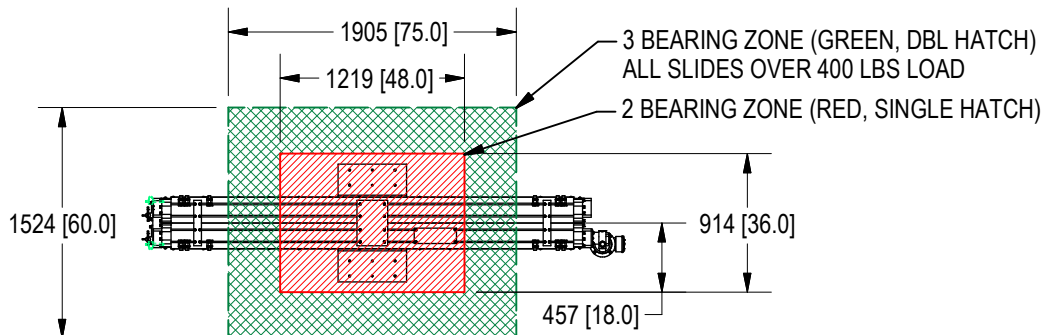
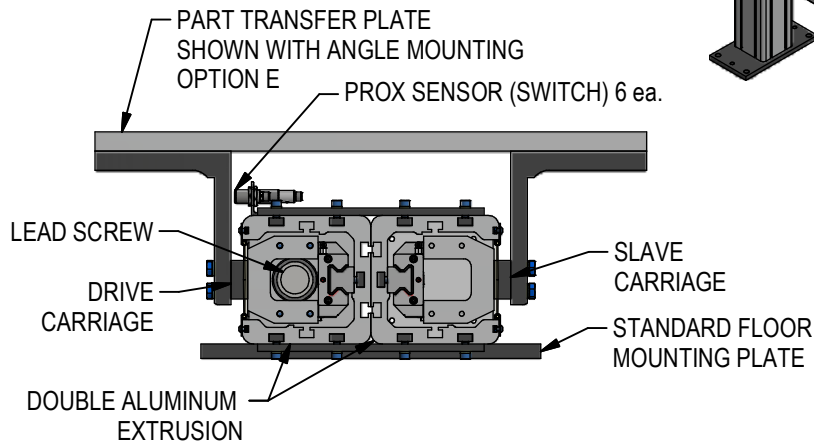
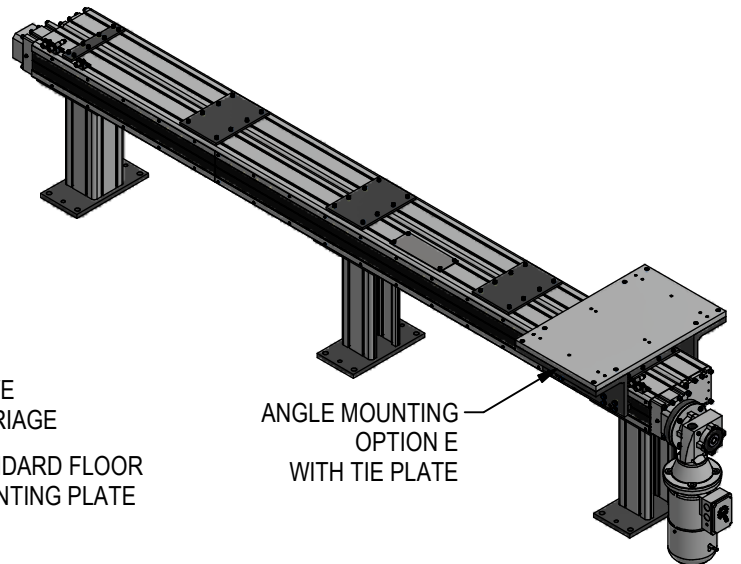
1 Motor @ P1
2 Motor @ P2
3 Motor @ P3
4 Motor @ P4

Brake Motor & Gearbox Ratio ~ See Load Charts

C 460 VAC 3 hp 5:1
D 460 VAC 3 hp 7.5:1
E Servo (Contact Welker)
K 575 VAC 3 hp 5:1
L 575 VAC 3 hp 7.5:1
N 460 VAC 3 hp 10:1
Q 575 VAC 3 hp 10:1

Weights for tie plates (options D & E) are included in load charts. Weights for customer supplied tie plates exceeding weights shown below must be included in tooling load.

Angle Mounting	Style 03	Style 04
B - Inboard	28 lbs	41 lbs
C - Outboard	50 lbs	72 lbs



(DO NOT SCALE DRAWING)



ENGINEERED PRODUCTS

800-229-0890 www.welkerproducts.com

PUSH/PULL EXTRUSION SLIDE ~ ORDER INFORMATION

CARRIAGES MUST MOVE OPPOSITE

A **E** **S** [] [] [] [] [] [] [] [] [] [] **0** []

Index

0400 400, 800, 1200, 1600, 2000, 2400
2800, 3200, 3600, 4000, 4400

Screw Type

B1 Ball 1.500 x 1.875
L1 Lead 1.875 x 4 (Standard)

Style

07 Push / Pull (2 Bearing)
08 Push / Pull (3 Bearing)

Angle Mounting

A None (Customer to supply)
B Inboard (Facing in towards extrusion)
C Outboard (Facing away from extrusion)

Leg Height

000 No legs (Standard Floor Plates)
350 350mm to 900mm
500mm Minimum for motor @ P3 (to clear floor)

Leg Style

0 Aluminum Extrusion (Standard)
A Weldment Brown 2.5Y 5/2
B Weldment Cream RAL-9001
C Weldment Light Grey RAL-7035
D Weldment Signal White RAL-9003
S Weldment Safety Blue RAL-5017
X Weldment (Customer to specify on Purchase Order)

Switches (6)

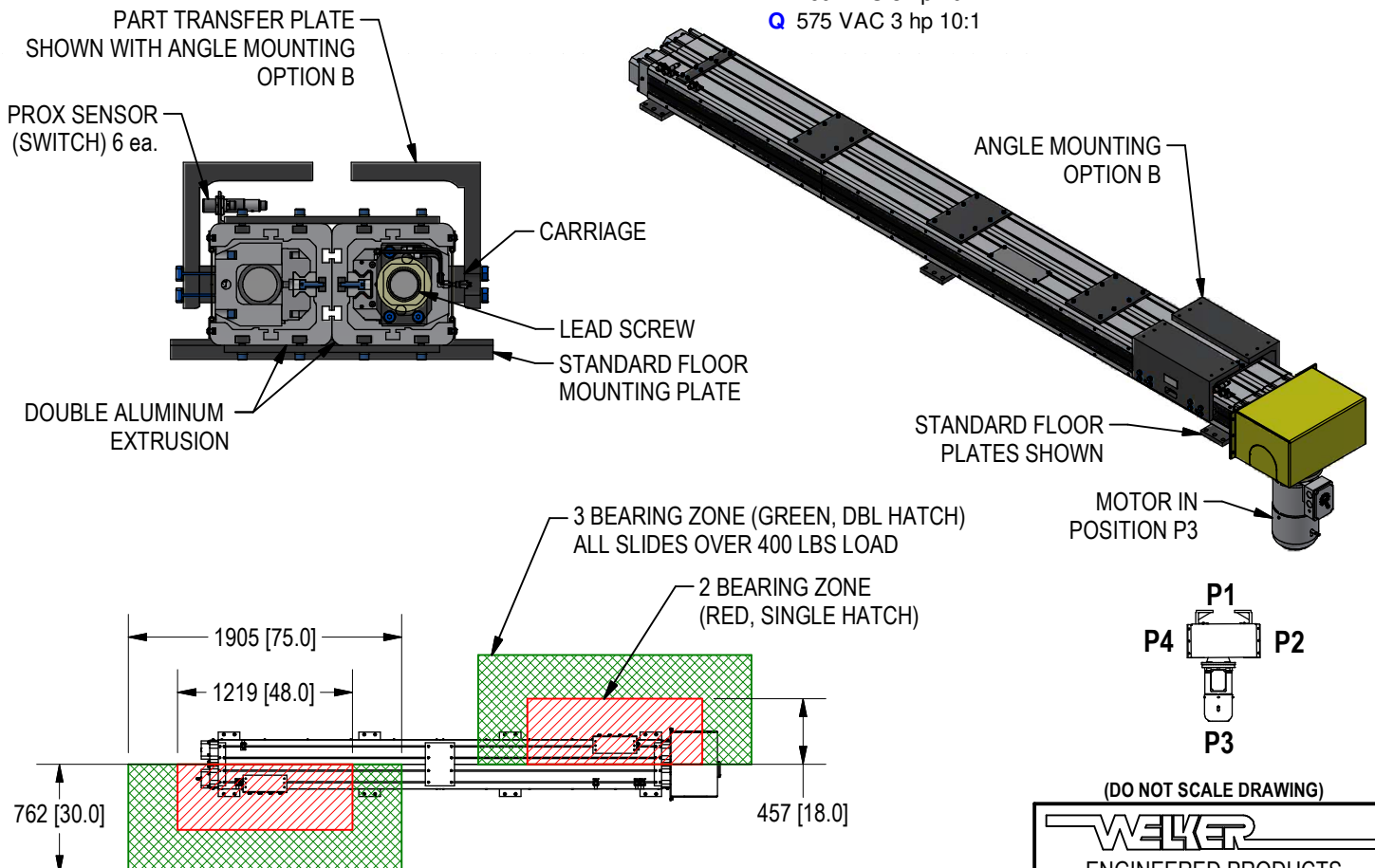
0 None / Customer Supplied
W Welker Standard

Motor Orientation

1 Motor @ P1
2 Motor @ P2
3 Motor @ P3
4 Motor @ P4

Brake Motor & Gearbox Ratio ~ See Load Charts

C 460 VAC 3 hp 5:1
D 460 VAC 3 hp 7.5:1
E Servo (Contact Welker)
K 575 VAC 3 hp 5:1
L 575 VAC 3 hp 7.5:1
N 460 VAC 3 hp 10:1
Q 575 VAC 3 hp 10:1



(DO NOT SCALE DRAWING)

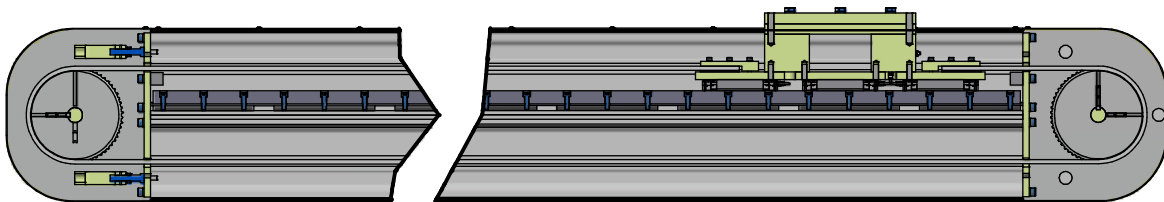
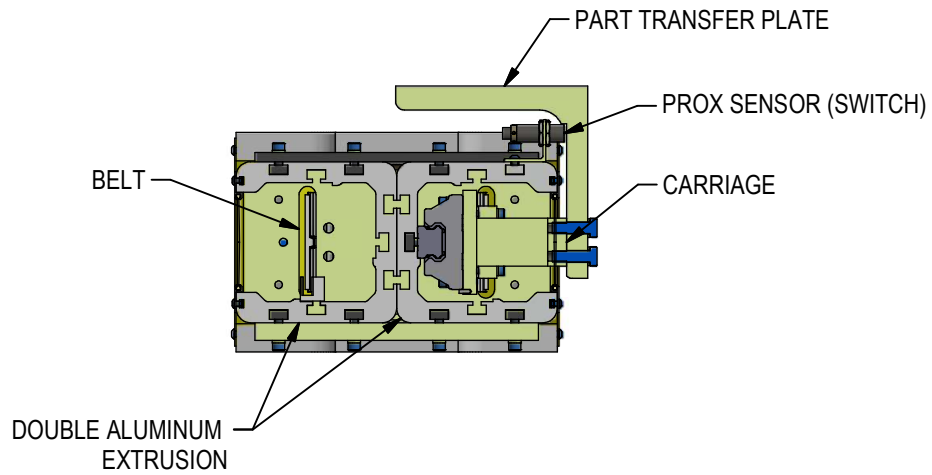
WELKER
ENGINEERED PRODUCTS
800-229-0890 www.welkerproducts.com

PART PRESENTATION SLIDE: BELT DRIVE, SINGLE

**PLEASE USE EXTRUSION SLIDE WORKSHEET QPE-FM-007 FOR ORDERING
CONTACT WELKER FOR BELT APPLICATIONS**

SINGLE CARRIAGE - 3 BEARINGS PER CARRIAGE
1 MOTOR: 1 HP STANDARD

APPLICATION: LONG STROKES 5M TO 10M
LOADS UP TO 500 LBF 40" WIDE
SPEED TO 30" PER SECOND



(DO NOT SCALE DRAWING)

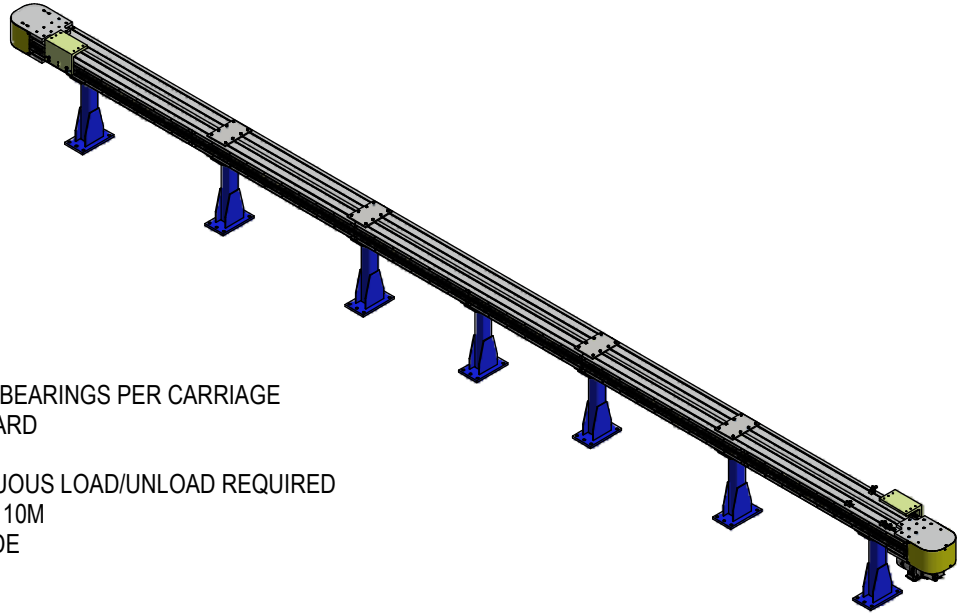
WELKER

ENGINEERED PRODUCTS

800-229-0890 www.welkerproducts.com

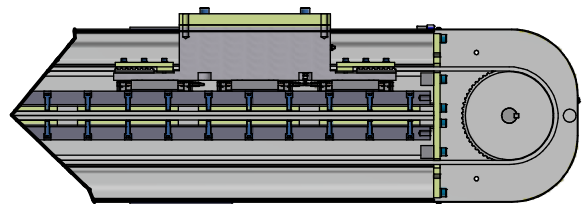
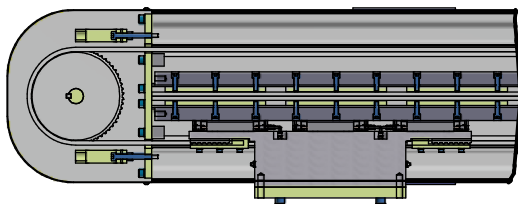
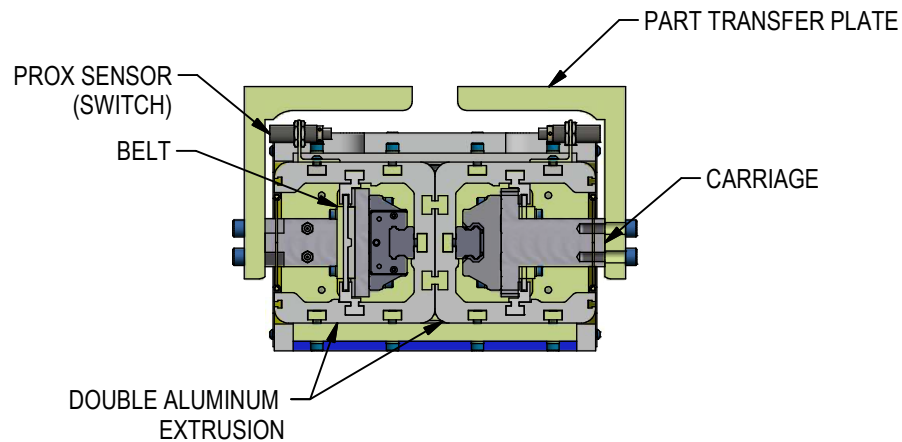
PART PRESENTATION SLIDE: BELT DRIVE, PUSH/PULL
CARRIAGES MUST MOVE OPPOSITE

PLEASE USE EXTRUSION SLIDE WORKSHEET QPE-FM-007 FOR ORDERING
CONTACT WELKER FOR BELT APPLICATIONS



DOUBLE CARRIAGE - 3 BEARINGS PER CARRIAGE
1 MOTOR: 3 HP STANDARD

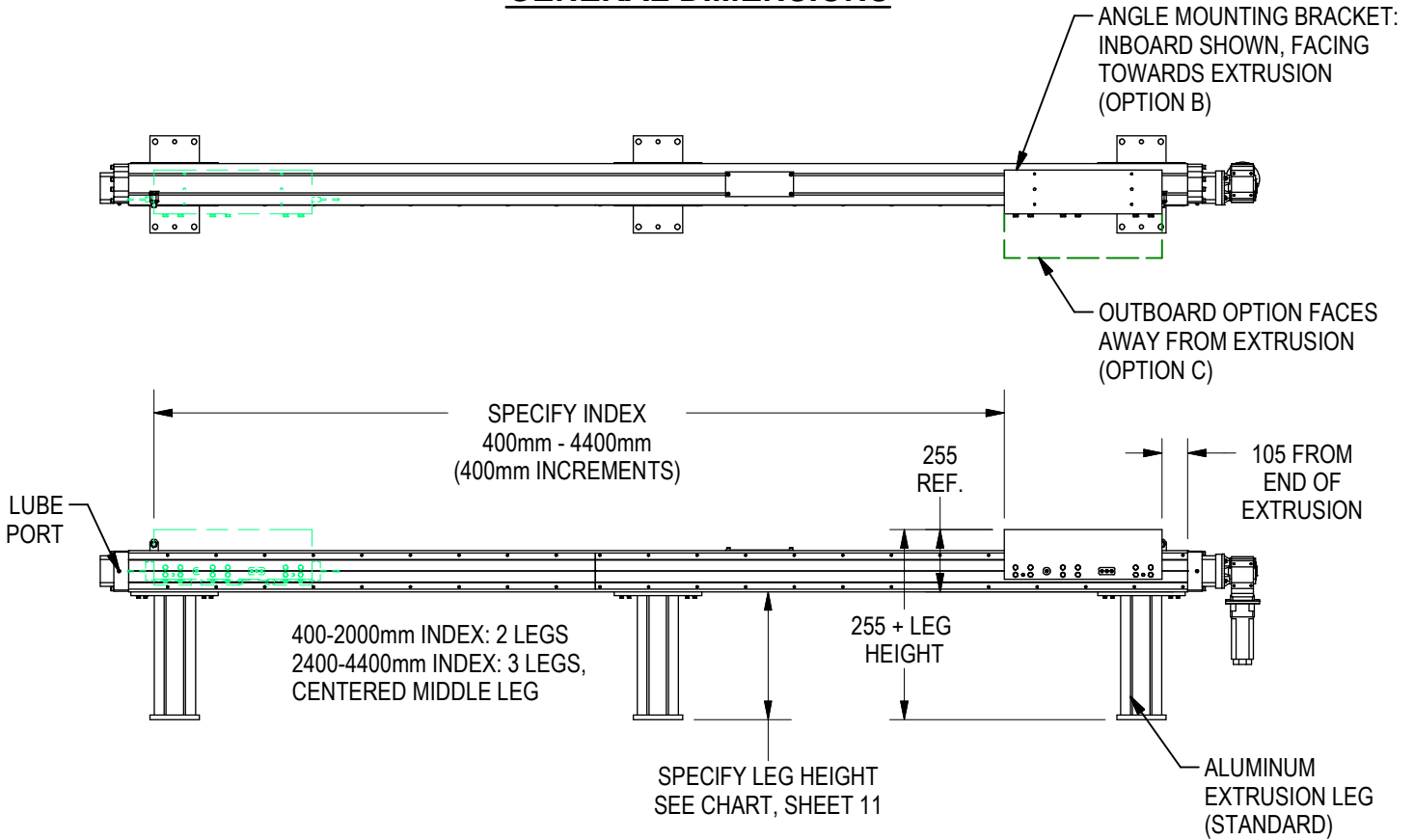
APPLICATION: CONTINUOUS LOAD/UNLOAD REQUIRED
LONG STROKES UP TO 10M
UP TO 400 LBF 36" WIDE



(DO NOT SCALE DRAWING)

WELKER
ENGINEERED PRODUCTS
800-229-0890 www.welkerproducts.com

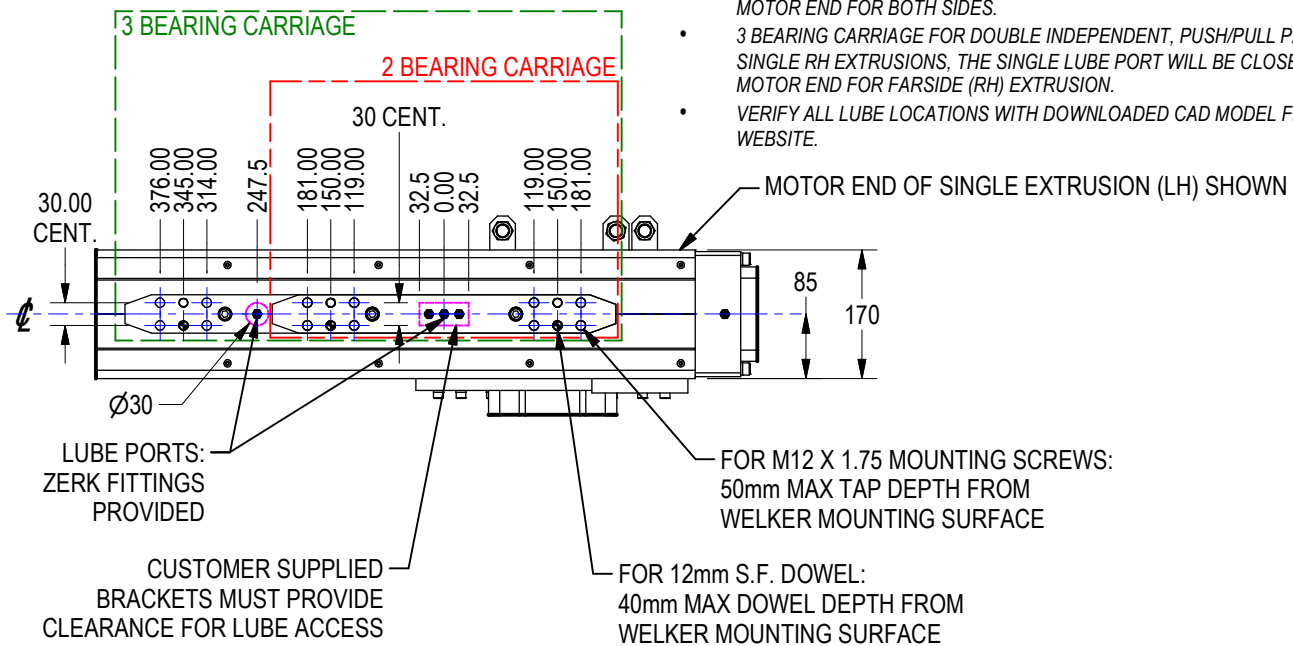
GENERAL DIMENSIONS



OPTION A ~ NO ANGLE MOUNTING BRACKET

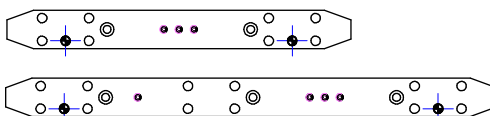
LUBE ACCESS NOTE:

- 3 BEARING CARRIAGE FOR DOUBLE EXTRUSION WILL REQUIRE SHOWN/OPPOSITE LUBE ACCESS. 3-POINT ACCESS WILL BE CLOSEST TO MOTOR END FOR BOTH SIDES.
- 3 BEARING CARRIAGE FOR DOUBLE INDEPENDENT, PUSH/PULL PACKAGES AND SINGLE RH EXTRUSIONS, THE SINGLE LUBE PORT WILL BE CLOSEST TO MOTOR END FOR FAR SIDE (RH) EXTRUSION.
- VERIFY ALL LUBE LOCATIONS WITH DOWNLOADED CAD MODEL FROM WELKER WEBSITE.



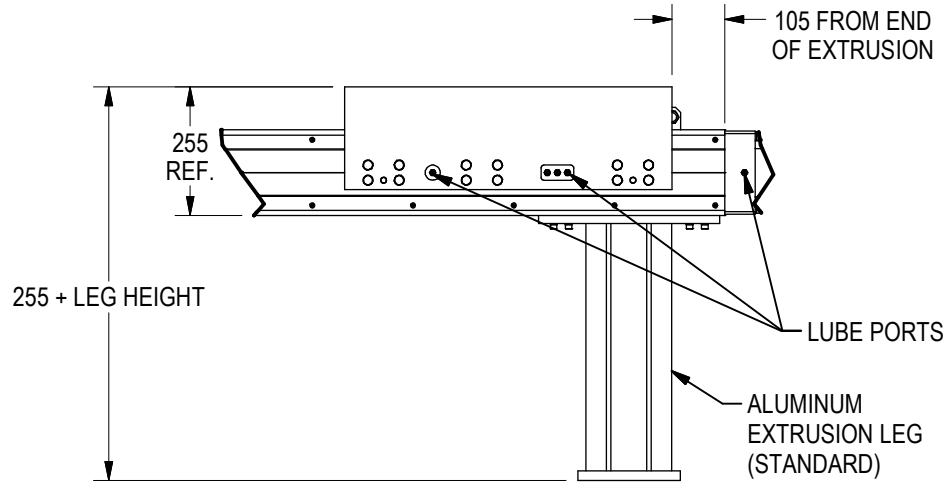
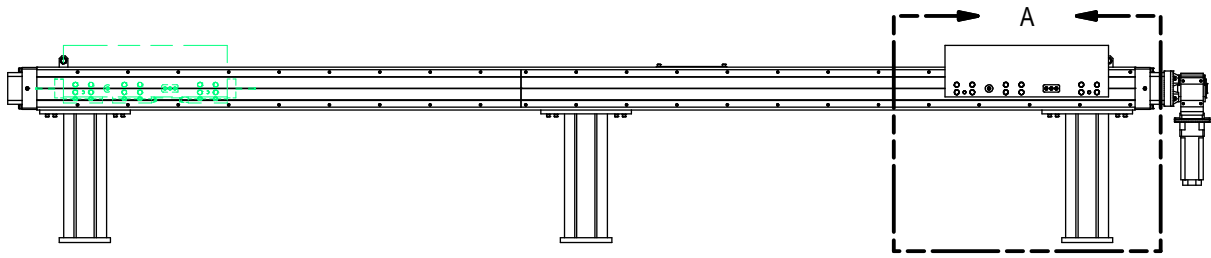
CARRIAGE	ZERK FITTINGS	SCREWS REQ'D	DOWELS REQ'D
2 BEARING	3	8	2*
3 BEARING	4	12	2*

*DOWEL HOLES LOCATED:

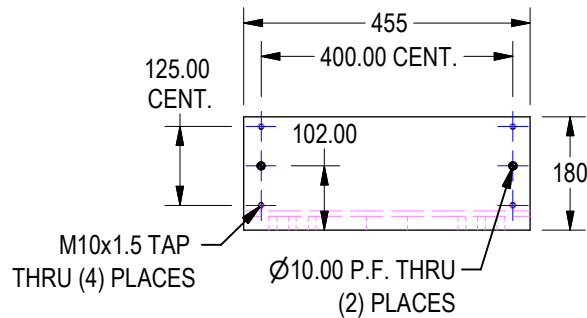
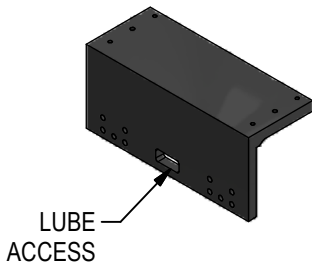


(DO NOT SCALE DRAWING)

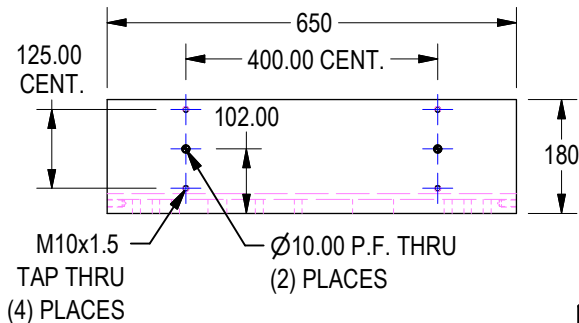
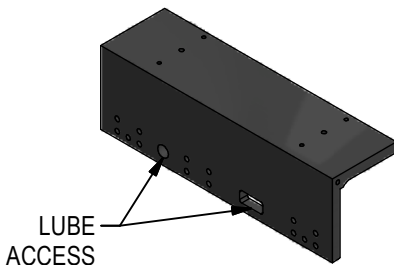
ANGLE MOUNTING BRACKET DIMENSIONS



ANGLE MOUNTING BRACKET 2 BEARING CARRIAGE



ANGLE MOUNTING BRACKET 3 BEARING CARRIAGE



(DO NOT SCALE DRAWING)



ENGINEERED PRODUCTS

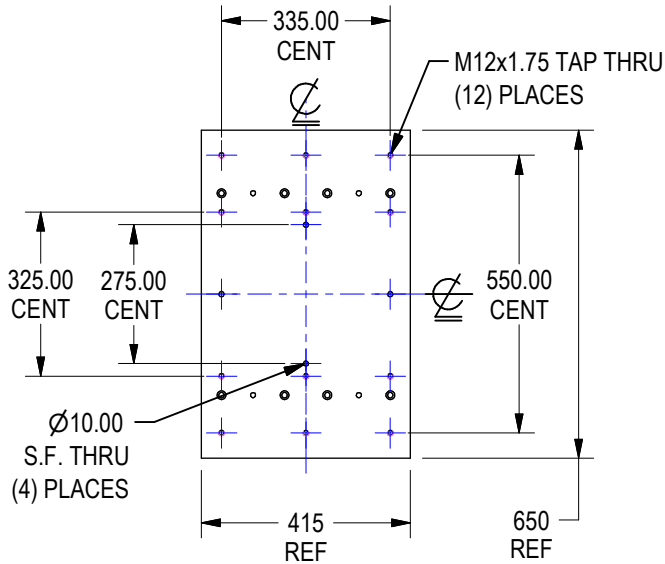
800-229-0890 www.welkerproducts.com

STANDARD TIE PLATES FOR DOUBLE EXTRUSION UNITS

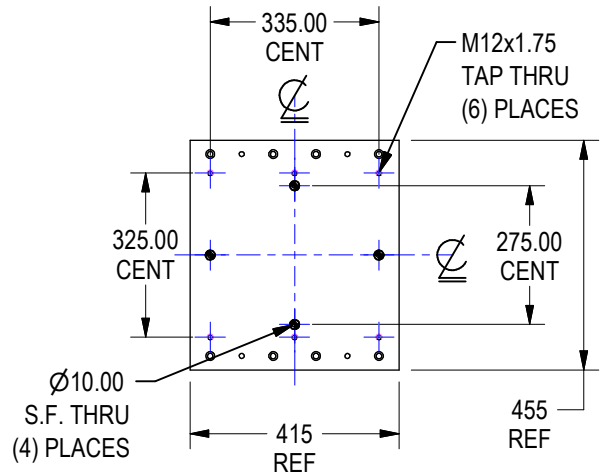
CUSTOMER MOUNTING PATTERNS

OPTION D & E

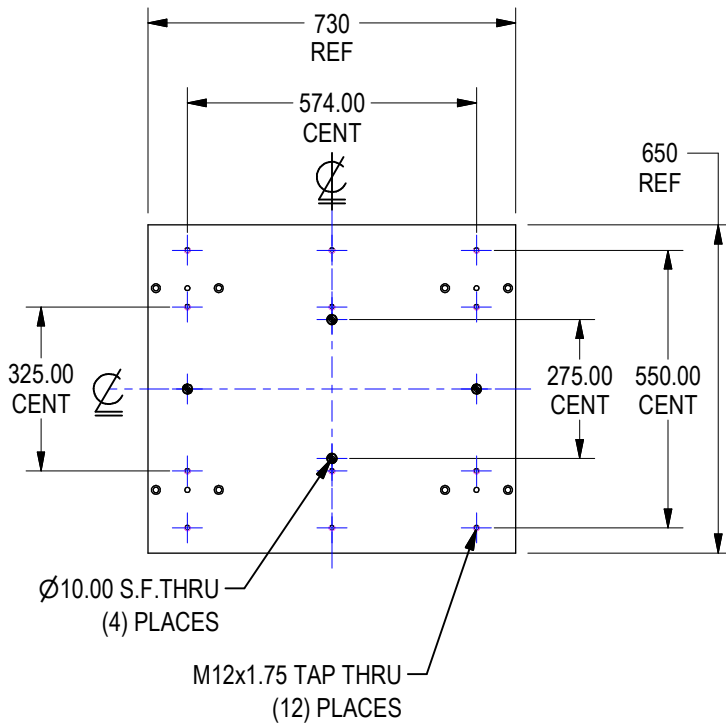
**3 BEARING INBOARD
OPTION D**



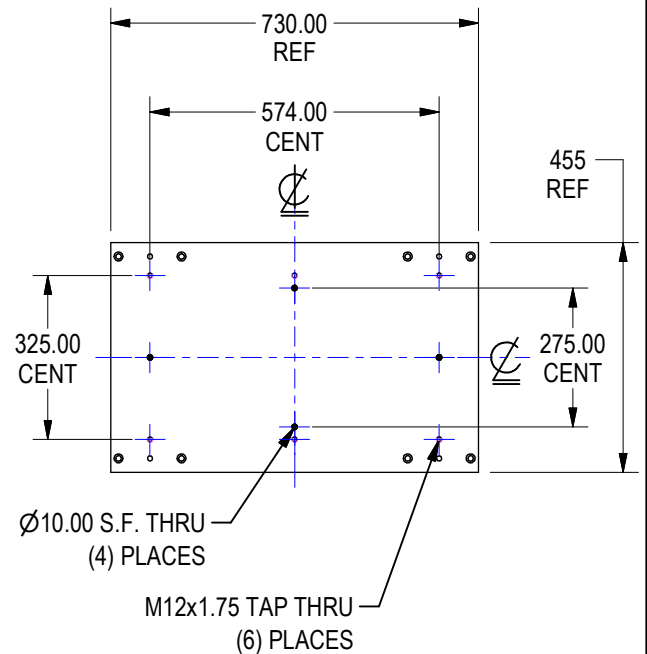
**2 BEARING INBOARD
OPTION D**



**3 BEARING OUTBOARD
OPTION E**



**2 BEARING OUTBOARD
OPTION E**

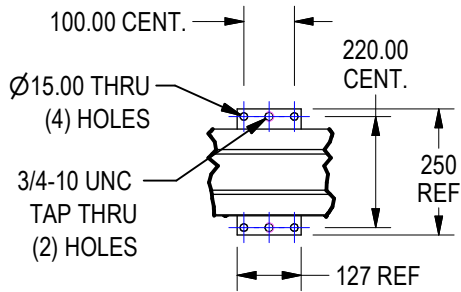


(DO NOT SCALE DRAWING)

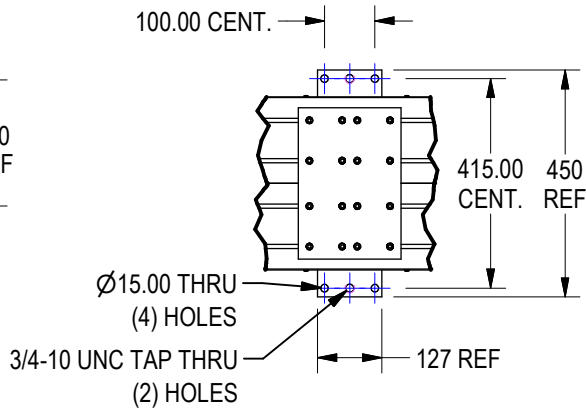
WELKER
ENGINEERED PRODUCTS
800-229-0890 www.welkerproducts.com

STANDARD FLOOR MOUNTING PLATES

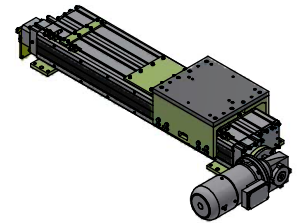
SINGLE, STYLE 01/02



DOUBLE, STYLES 03-08



SHOWN: STYLE 03
WITH MOTOR IN
POSITION P4



400-2000mm INDEX: 2 PLATES
2400-4400mm INDEX: 3 PLATES,
CENTERED MIDDLE PLATE

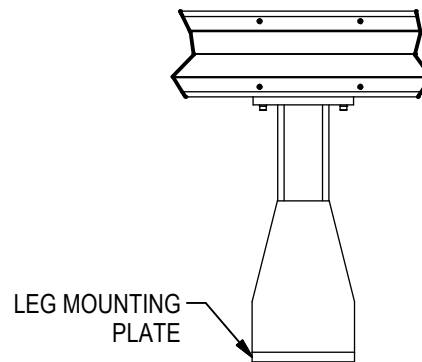
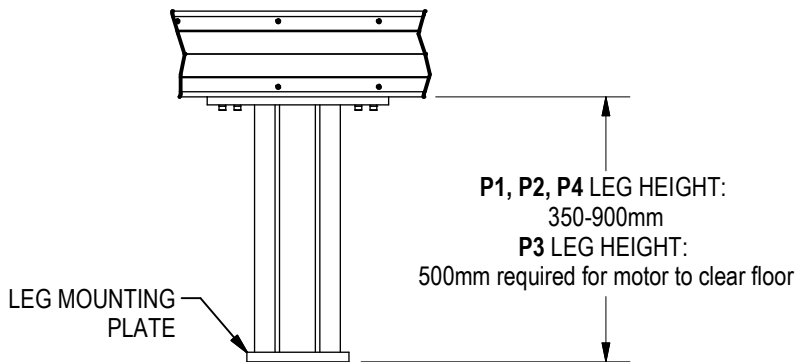
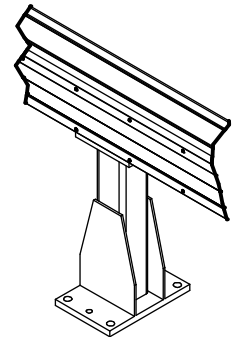
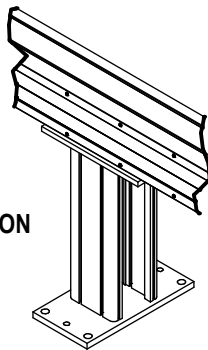
LEG OPTIONS

400-2000mm INDEX: 2 LEGS
2400-4400mm INDEX: 3 LEGS,
CENTERED MIDDLE LEG

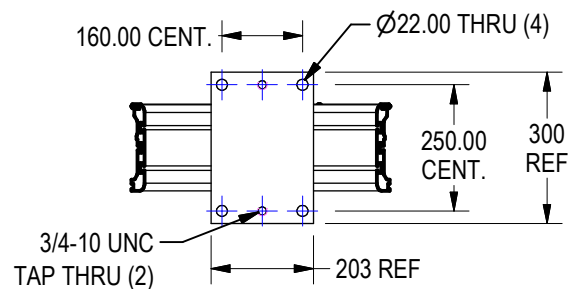
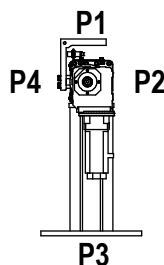
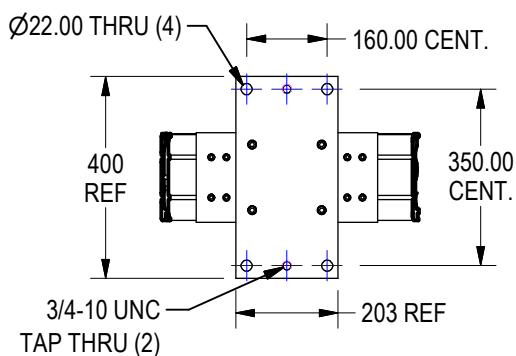
LEG STYLES A, B, C, D, S, X WELDMENT, PAINTED

STYLE	PAINT
A	Brown 2.5Y 5/2
B	Cream RAL-9001
C	Light Grey RAL-7035
D	Signal White RAL-9003
S	Safety Blue RAL-5017
X	Customer spec on P.O.

LEG STYLE 0 ALUMINUM EXTRUSION (STANDARD)



MOTOR POSITIONS:



(DO NOT SCALE DRAWING)

WELKER
ENGINEERED PRODUCTS
800-229-0890 www.welkerproducts.com

GENERAL SPECIFICATIONS

SLIDE STYLE	MAX LOAD	MAX TRAVEL	MAX LOAD SIZE, CENTERED
Single Extrusion Frame Rail	500 lbf	Screw: 4400mm Belt: Contact Welker	36"W x 48"L
Double Extrusion Frame Rail	1000 lbf	Screw: 4400mm Belt: Contact Welker	60"W x 72"L

ELECTRIC ACTUATORS

(PANEL BOXES & CONTROLS SOLD SEPARATELY)

ACTUATOR TYPE	FEATURES & BENEFITS	APPLICATIONS
VFD (Variable Frequency Drive) Welker standard AC induction motor and gearbox is Nord brand, right angle gearbox with brake.	Cost saving; least expensive when used with <1HP (800 watt) applications. Lowest cost in low speed applications. Easy to change decel and stop points by moving switches. Space saving right-angle configurations. Repeatability +/- 1mm	Part presentation Cart pullers
Servo Welker standard is Exlar Tritex II integrated servo with Ethernet Absolute encoder and brake.	High speed capacities. High load capacities. Extreme accuracy. Repeatability +/- .005 rolled ball screw Repeatability +/- .001 ground ball screw Multiple positions; cycle resumes after e-stop	Clinch or weld gun positioning Geo model select Tool tray actuator

All robot motors and controllers are supplied by customer (Kuka, Fanuc, Nachi, ABB, Kawasaki, etc.)
Welker will provide motor math and an engineering drawing of the slide in PDF format based on the information submitted with the Electric Slide Worksheet. The PDF must be approved and signed before an order can be accepted.
Welker will supply ONLY what is shown on the signed PDF.

STANDARD SCREW DRIVES

TYPE	MAX SPEED
Lead screw 1-7/8 x 4	18 inches per second
Ball screw 1-1/2 x 1-7/8	Depends on length

Other screws available per application

(DO NOT SCALE DRAWING)



PROX SENSORS (SWITCHES)

A
E
S
2
4
0
0
L
1
0
1
A
3
5
0
G
3
W
0
0

Switches

- 0 None / Customer Supplied
- W Welker Standard

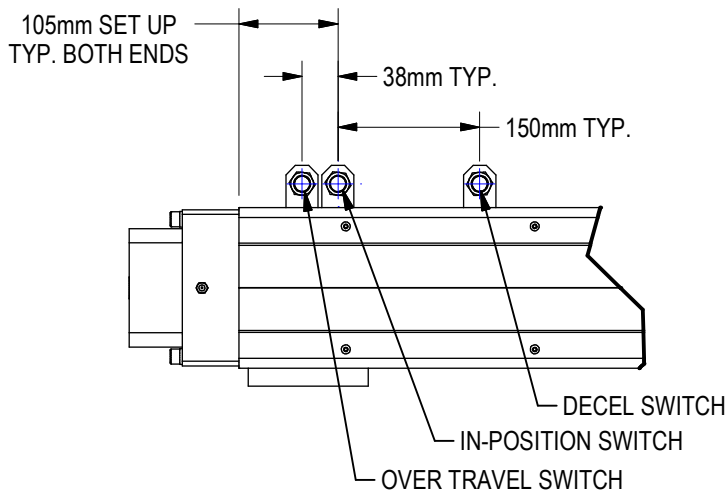
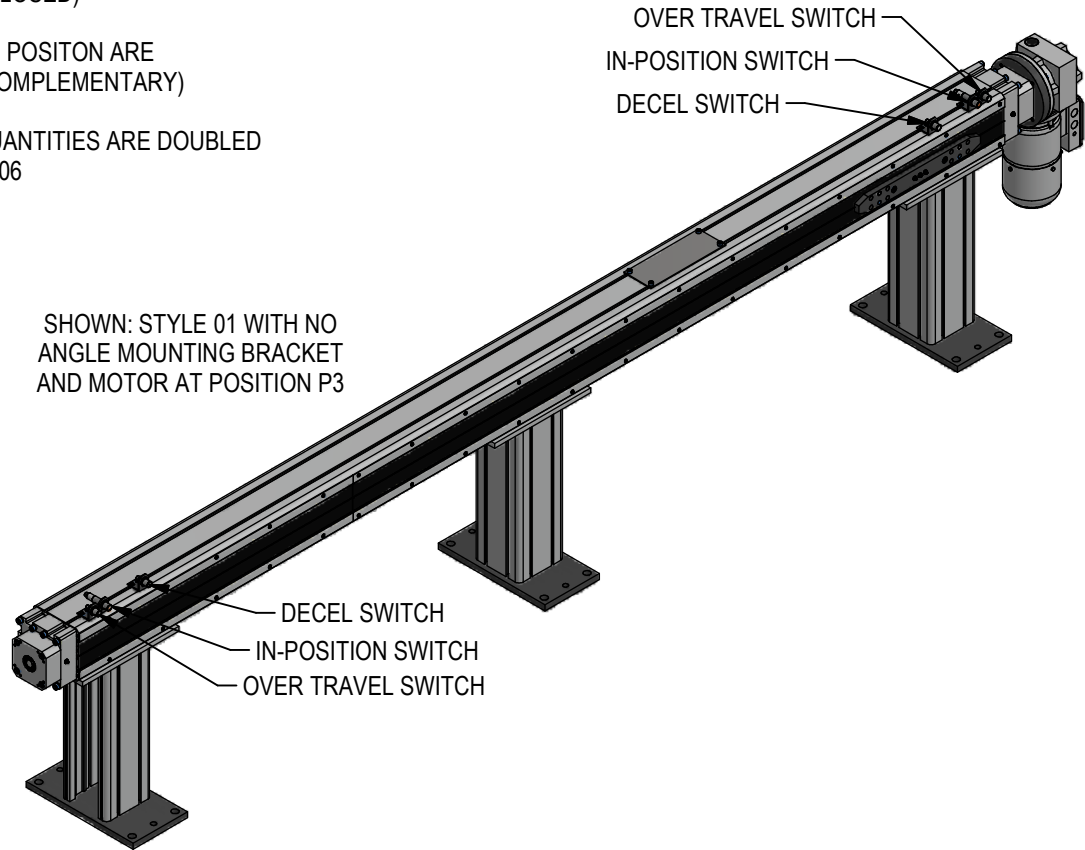
WELKER STANDARD SWITCHES

IFM EFECTOR

SWITCHES FOR DECEL AND OVER TRAVEL
(4) IGC207 (PNP CLOSED)

SWITCHES FOR IN POSITION ARE
(2) IG5539 (PNP COMPLEMENTARY)

NOTE: SWITCH QUANTITIES ARE DOUBLED
FOR STYLES 05 & 06



(DO NOT SCALE DRAWING)



ENGINEERED PRODUCTS

800-229-0890 www.welkerproducts.com

1 HP MOTOR LOAD CHART

Load Chart: Single, Double, Double Independent

1HP		Standard Index Lengths in mm										
		400	800	1200	1600	2000	2400	2800	3200	3600	4000	4400
Pounds	50	1.9	2.7	3.5	4.4	5.2	6	6.9	7.7	10.5	11.5	12.5
	75	1.9	2.7	3.5	4.4	5.2	6	6.9	7.7	10.5	11.5	12.5
	100	1.9	2.7	3.5	4.4	5.2	6	6.9	7.7	10.5	11.5	12.5
	125	1.9	2.7	3.5	4.4	5.2	6	6.9	7.7	10.5	11.5	12.5
	150	1.9	2.7	3.5	4.4	5.2	6	6.9	7.7	10.5	11.5	12.5
	175	1.9	2.7	3.5	4.4	5.2	6	6.9	7.7	10.5	11.5	12.5
	200	1.9	2.7	3.5	4.4	5.2	6	6.9	7.7	10.5	11.5	12.5
	225	1.9	2.7	4	4.4	5.2	6	6.9	7.7	10.5	11.5	12.5
	250	2.1	3.1	4	5.1	6.2	7.2	8.2	9.3	10.5	11.5	12.5
	275	2.1	3.1	4	5.1	6.2	7.2	8.2	9.3	10.5	11.5	12.5
	300	2.1	3.1	4	5.1	6.2	7.2	8.2	9.3	10.5	11.5	12.5
	325	2.1	3.1	4	5.1	6.2	7.2	8.2	9.3	10.5	11.5	12.5
	350	2.1	3.1	4	5.1	6.2	7.2	8.2	9.3	10.5	11.5	12.5
	375	2.1	3.1	4	5.1	6.2	7.2	8.2	9.3	10.5	11.5	12.5
	400	2.1	3.1	4	5.1	6.2	7.2	8.2	9.3	10.5	11.5	12.5
	425	2.1	3.1	4	5.1	6.2	7.2	8.2	9.3	10.5	11.5	12.5
	450	2.1	3.9	5	6.5	7.8	9.2	10.6	11.9	10.5	11.5	12.5
	475	2.1	3.9	5	6.5	7.8	9.2	10.6	11.9	11	12	13
500	2.4	3.9	5	6.5	7.8	9.2	10.6	11.9	11	12.5	13.5	
Gear Box		5:1		7.5:1			10:1					

VOLTAGE NOTE: MOTOR VOLTAGE AND BRAKE VOLTAGE ARE THE SAME. CONTACT WELKER IF DIFFERENT VOLTAGE IS REQUIRED BETWEEN MOTOR & BRAKE.

**VALUES SHOWN ARE IN SECONDS, CYCLE TIME: ONE WAY
BASED ON 18"/SEC MINIMUM SPEED AFTER ACCELERATION**

(DO NOT SCALE DRAWING)



ENGINEERED PRODUCTS

800-229-0890 www.welkerproducts.com

3 HP MOTOR LOAD CHARTS

Load Chart: Single, Double, Double Independent

3HP		Standard Index Lengths in mm										
		400	800	1200	1600	2000	2400	2800	3200	3600	4000	4400
Pounds	50		2.7	3.5	4.4	5.2	6	6.9	7.7	10.3	11.3	12.3
	75		2.7	3.5	4.4	5.2	6	6.9	7.7	10.3	11.3	12.3
	100		2.7	3.5	4.4	5.2	6	6.9	7.7	10.3	11.3	12.3
	125		2.7	3.5	4.4	5.2	6	6.9	7.7	10.3	11.3	12.3
	150		2.7	3.5	4.4	5.2	6	6.9	7.7	10.3	11.3	12.3
	175		2.7	3.5	4.4	5.2	6	6.9	7.7	10.3	11.3	12.3
	200		2.7	3.5	4.4	5.2	6	6.9	7.7	10.3	11.3	12.3
	225		2.7	3.5	4.4	5.2	6	6.9	7.7	10.3	11.3	12.3
	250		2.7	3.5	4.4	5.2	6	6.9	7.7	10.3	11.3	12.3
	275		2.7	3.5	4.4	5.2	6	6.9	7.7	10.3	11.3	12.3
	300		2.7	3.5	4.4	5.2	6	6.9	7.7	10.3	11.3	12.3
	325		2.7	3.5	4.4	5.2	6	6.9	7.7	10.3	11.3	12.3
	350		2.7	3.5	4.4	5.2	6	6.9	7.7	10.3	11.3	12.3
	375		2.7	3.5	4.4	5.2	6	6.9	7.7	10.3	11.3	12.3
	400		2.7	3.5	4.4	5.2	6	6.9	7.7	10.3	11.3	12.3
	425		2.7	3.5	4.4	5.2	6	6.9	7.7	10.3	11.3	12.3
	450	2	2.7	3.5	4.4	5.2	6	6.9	7.7	10.3	11.3	12.3
475	2	2.7	3.5	4.4	5.2	6	6.9	7.7	10.3	11.3	12.3	
500	2	2.7	3.5	4.4	5.2	6	6.9	7.7	10.3	11.3	12.3	
Gear Box		5:1	7.5:1			10:1						

Load Chart: Push/Pull

3HP P/P		Standard Index Lengths in mm											
		400	800	1200	1600	2000	2400	2800	3200	3600	4000	4400	
Pounds	50			3.5	4.5	5.3	6.2	7	7.9	10.3	11.3	12.3	
	75			3.5	4.5	5.3	6.2	7	7.9	10.3	11.3	12.3	
	100			3.5	4.5	5.3	6.2	7	7.9	10.3	11.3	12.3	
	125			3.5	4.5	5.3	6.2	7	7.9	10.3	11.3	12.3	
	150			3.5	4.5	5.3	6.2	7	7.9	10.3	11.3	12.3	
	175			3.5	4.5	5.3	6.2	7	7.9	10.3	11.3	12.3	
	200			3.5	4.5	5.3	6.2	7	7.9	10.3	11.3	12.3	
	225			3.5	4.5	5.3	6.2	7	7.9	10.3	11.3	12.3	
	250			3.5	4.5	5.3	6.2	7	7.9	10.3	11.3	12.3	
	275			3.5	4.5	5.3	6.2	7	7.9	10.3	11.3	12.3	
	300			3.5	4.5	5.3	6.2	7	7.9	10.3	11.3	12.3	
	325			3.5	4.5	5.3	6.2	7	7.9	10.3	11.3	12.3	
	350			3.5	4.5	5.3	6.2	7	7.9	10.3	11.3	12.3	
	375			3.5	4.5	5.3	6.2	7	7.9	10.3	11.3	12.3	
	400			3.5	4.5	5.3	6.2	7	7.9	10.3	11.3	12.3	
	425			4	4.5	5.3	6.2	7	8	9	10.3	11.3	12.3
	450			4	5	6	7	8	9	10.3	11.3	12.3	
475			4	5	6	7	8	9	10.3	11.3	12.3		
500			4	5	6	7	8	9	10.3	11.3	12.3		
Gear Box		5:1	7.5:1			10:1							

VALUES SHOWN ARE IN SECONDS, CYCLE TIME: ONE WAY BASED ON 18"/SEC MINIMUM SPEED AFTER ACCELERATION

VOLTAGE NOTE: MOTOR VOLTAGE AND BRAKE VOLTAGE ARE THE SAME. CONTACT WELKER IF DIFFERENT VOLTAGE IS REQUIRED BETWEEN MOTOR & BRAKE.

(DO NOT SCALE DRAWING)



ENGINEERED PRODUCTS

800-229-0890 www.welkerproducts.com