

2X CROWNED HARD STOP  
W/ NAAMS ASP350 GRIND SPACER

RAIL ALIGNMENT DOWELS

1" DIA SAFETY LOCKOUT  
WITH TURCK #1627297  
TRU LOCK #SP25Y100T000201

HARDENED STOP BLOCK

2X ENERTROLS SHOCKS  
#HP-6000 RFM PSB

2X THK BRAND SHS35 SERIES RAILS  
CUT TO STANDARD LENGTHS  
STANDARD WIDTH CARRIAGES  
E OPTION SIDE LUBE & PLUG

NAAMS SHOCK/STOP  
BRACKET #AHM141

CASE HARDENED  
STOP BAR

KEYED DRIVE BLOCK

NC9 CLEVIS W/ LOCKNUT & ROD LOCK

ALUMINIZED KEVLAR BELLOWS

4" BORE, 1 3/4" DIA ROD NC9 TRUNNION CYL  
WITH ROD BOOT & EXTRA LONG MALE THREAD

NAAMS TRUNNION BLOCKS

KEYED TRUNNION MOUNT

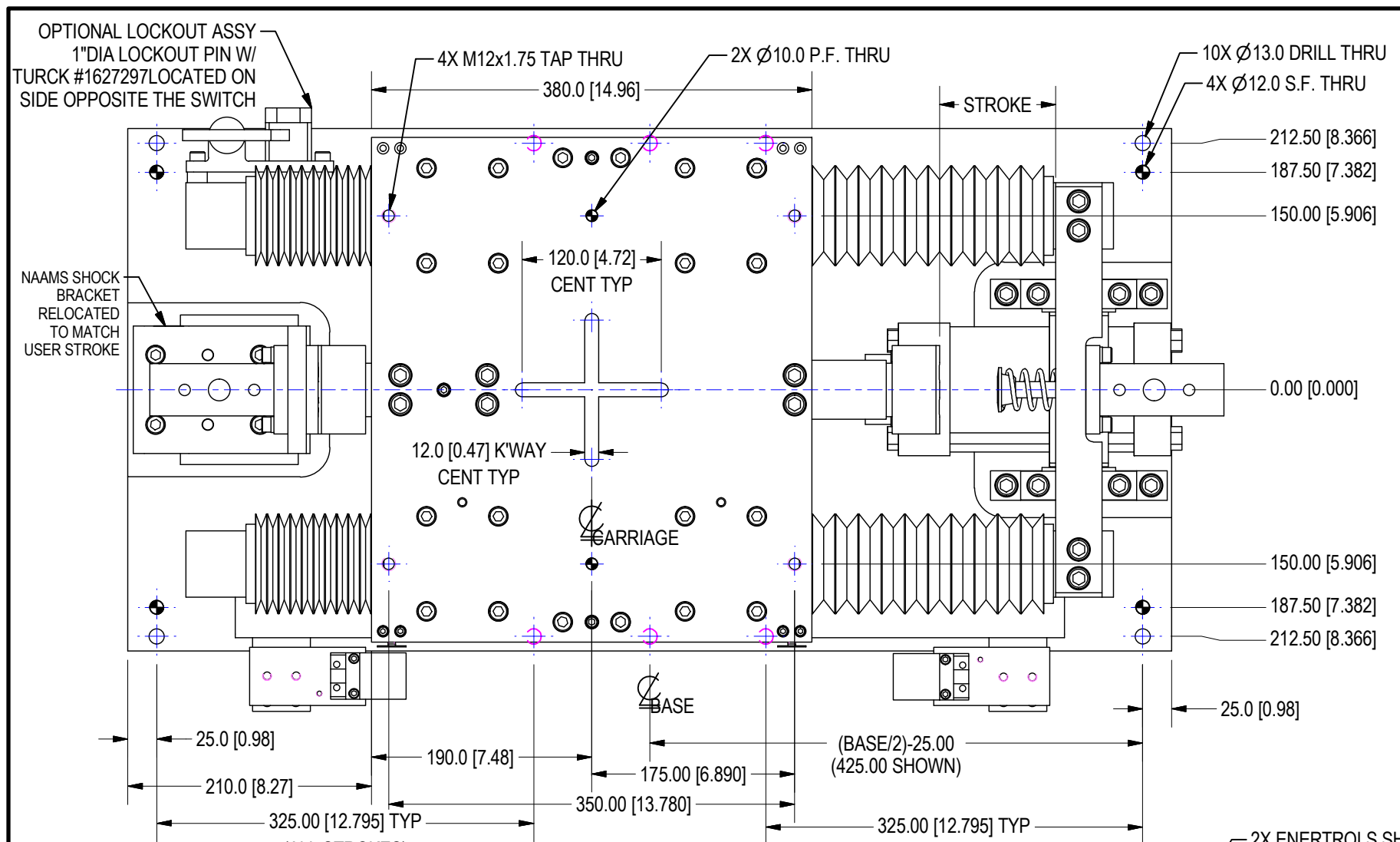
1" DIA LOCKOUT RECEIVER  
W/ KEYED MOUNT  
BOTH SIDES

CUT OUTS FOR CLEVIS ACCESS  
IN BOTH EXTEND & RETRACT POSITIONS

2X 40mm CUBE SWITCH W/  
NAAMS SWITCH MOUNTING  
ASM5050, ASA6040, ASA9000  
& UNISTRUT P3000

WELDED STEEL CUSTOM BASE

FORD 4" BORE NC9 NARROW 35 RAIL SLIDE  
REF WELKER #S01430



### ORDERING INFORMATION

**S 0 1 4 3 0 - A 0 8 0 0 1 A 0 0 0 0 X 1 T**

**Base Stroke**  
 A 005-100mm  
 B 101-180mm  
 C 181-260mm  
 D 261-340mm  
 E 341-420mm  
 F 421-500mm

**Actual Stroke**  
 080 Must be within range of Base Stroke  
 i.e. for 80mm stroke, use Base "A"

**Cylinder Options (Pneumatic)**  
 01 Double Acting (NPT Ports)  
 02 Double Acting (G Ports)

**Switch Location (Lockout assy located on opposite side)**  
 A Switch RH Side  
 B Switch LH Side (shown)

**Manual Lockout Assy**  
 X No Lockout Assy  
 M Manual Lockout Pin w/ Switch

**Bellocs**  
 0 No Bellocs  
 1 Bellocs

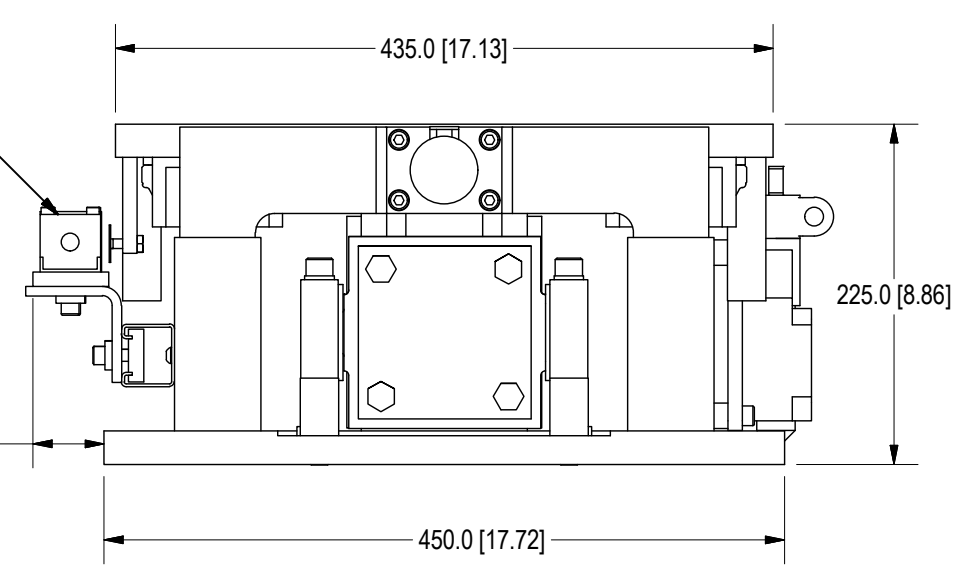
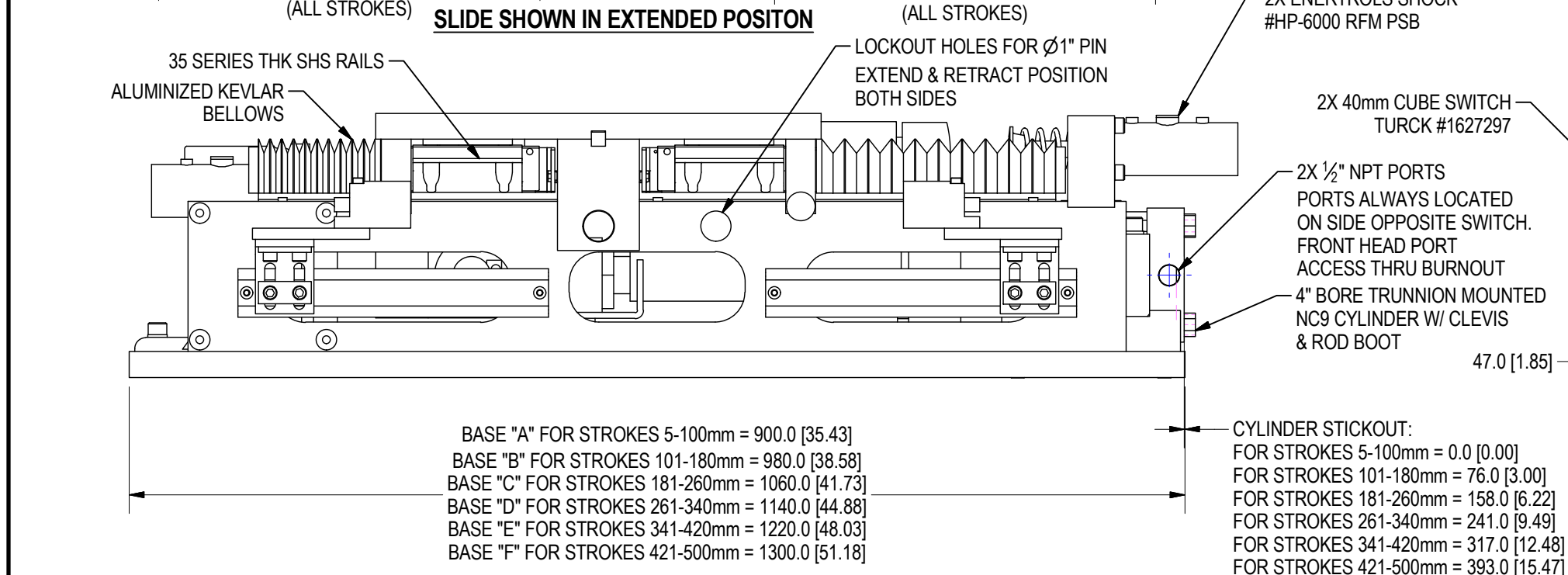
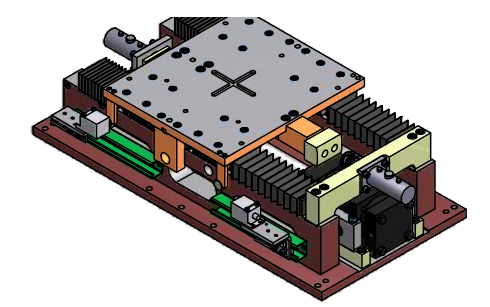
### APPROVAL

APPROVED:

AS NOTED:

BY: \_\_\_\_\_

DATE: \_\_\_\_\_



UNITS ARE MILLIMETERS  
(i.e. X.XXmm [x.xxx"])  
DO NOT SCALE DRAWING

**WEKER BEARING COMPANY**

TOOL NAME: FORD 4" BORE NC9 NARROW 35 RAIL SLIDE

TEMPLATE

DATE	STATUS	DRAWN BY	DATE	CHK'D BY	ENG APPROVAL
7/21/2011	Released	DJH	7/21/2011	JPX	
		SCALE	1:5	FILE NAME	S01430L01